

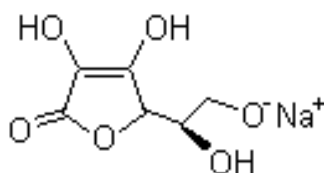
TECHNICAL DATA SHEET

NAME OF COMMODITY: Sodium Erythorbate

CAS NO.: 6381-77-7

MOLECULAR FORMULA: C₆H₇NaO₆

MOLECULAR WEIGHT: 198.12



STRUCTURE FORMULA:

TESTS	SPECIFICATIONS
Appearance	White crystalline powder or as granules
Assay %	98-100.5
Loss on Dying %	0.25 Max
Specific Rotation	95.5° ~ 98°
pH	5.5-8
Heavy Metals (Mg/Kg)	10 Max
Lead (Mg/Kg)	5 Max
Arsenic (Mg/Kg)	3 Max
Mercury (Mg/Kg)	1 Max

APPLICATIONS:

Sodium Erythorbate is an important antioxidant in the food industry. It can keep the color and natural flavor of foods and lengthen their storage without any toxicity or side effects. It can be used in meat processing, fruits, vegetables, tinned jams, etc. It is also used in drinks, such as beer, grape wines, soft drinks, fruit tea, fruit juices, etc.

PACKING: net 25kg bags; 20mt/20'fcl, palletized