

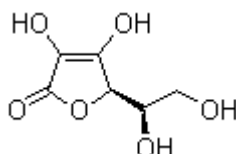
TECHNICAL DATA SHEET

NAME OF COMMODITY: ERYTHORBIC ACID

CAS NO.: 89-65-6

MOLECULAR FORMULA: C₆H₈O₆

MOLECULAR WEIGHT: 176.12



STRUCTURE FORMULA:

| TESTS | SPECIFICATIONS |
|-------------------------------------|---|
| Appearance | White Or Slightly Yellow Crystals Or Powder |
| Assay % | 99-100.5 |
| Loss on Drying % | 0.4 Max |
| Specific Rotation | -16.5° ~ -18° |
| Residue on Ignition (%) | 0.3 Max |
| Heavy Metals (as Pb) (mg/kg) | 10 Max |
| Lead (mg/kg) | 2 Max |
| Arsenic (mg/kg) | 3 Max |
| Mercury (mg/kg) | 1 Max |

APPLICATIONS:

Erythorbic Acid is an important antioxidant in the food industry. It can keep the color and natural flavor of foods and lengthen their storage without any toxicity or side effects. It can be used in meat processing, fruits, vegetables, tinned jams, etc. It's also used in drinks such as beer, grape wines, soft drinks, fruit tea, fruit juices, etc.

PACKING: net 25kg bags; 20mt/20'fcl palletized