

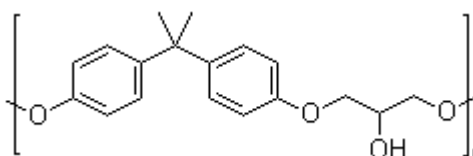
## TECHNICAL DATA SHEET

**NAME OF COMMODITY:** **Solid Epoxy Resin 1009**  
Offset to **SHELL Resin 1009**

**CAS NO.:** 25068-38-6

**MOLECULAR FORMULA:**  $C_{18}H_{21}ClO_3$

**MOLECULAR WEIGHT:**



**STRUCTURE FORMULA:**

TESTS	SPECIFICATIONS
Appearance	Transparent Solid Flake
Epoxy Equivalent, g/eq	2400 - 4000
Softening Point °C	130 - 150
Hydrolyzable Chloride Content Ppm	800 Max
Color (Gardner)	1 Max

**APPLICATION:**

Metal print paint, coating for coil coated steel, anticorrosive paint, insulation coating.

**PACKING:** net 25kg bags; 15mt / 20 'fcl, palletized