

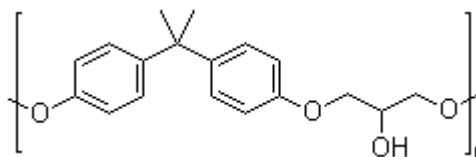
TECHNICAL DATA SHEET

NAME OF COMMODITY: Solid Epoxy Resin 1007
Offset to: SHELL Resin 1007

CAS NO.: 25068-38-6

MOLECULAR FORMULA: C₁₈H₂₁ClO₃

MOLECULAR WEIGHT:



STRUCTURE FORMULA:

TESTS	SPECIFICATIONS
Appearance	Transparent Solid Flake
Epoxy Equivalent , g/eq	1700 - 2500
Softening Point (°C)	115 - 135
Hydrolyzable Chloride Content ppm	800 Max
Color (Gardner)	0.5 Max
Viscosity @ 25°C	1800 Min

APPLICATION:

For use as an anticorrosive paint, insulation coating, metal print paint and coating for coil coated steel.

PACKING: net 25kg bags; 15mt / 20' fcl, palletized