

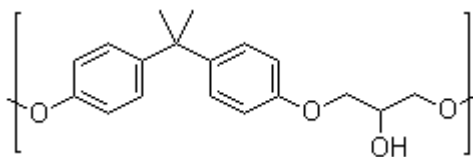
## TECHNICAL DATA SHEET

**NAME OF COMMODITY:** Solid Epoxy Resin 1004  
Offset to: SHELL Resin 1004

**CAS NO.:** 25068-38-6

**MOLECULAR FORMULA:** C<sub>18</sub>H<sub>21</sub>ClO<sub>3</sub>

**MOLECULAR WEIGHT:**



**STRUCTURE FORMULA:**

TESTS	SPECIFICATIONS
Appearance	Transparent Solid
Epoxy Equivalent, g.eq	800 - 1200
Hydrolyzable Chlorine	0.03% Max
Total Chlorine	0.5% Max
Color	1.5 Gardner Max
Softening Point °C	85 - 106

**APPLICATION:**

To produce epoxy ester or insulation material through fatty acid modification.

**PACKING:** net 25kg bags; 15mt / 20' fcl, palletized