

TECHNICAL DATA SHEET

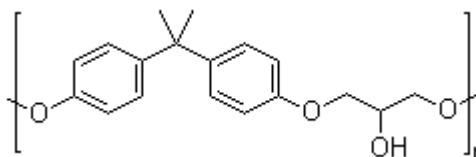
NAME OF COMMODITY: Solid Epoxy Resin 1001

Offset to: SHELL1001

CAS NO.: 25068-38-6

MOLECULAR FORMULA: C₁₈H₂₁ClO₃

MOLECULAR WEIGHT:



STRUCTURE FORMULA:

TESTS	SPECIFICATIONS
Appearance	Transparent Solid
Epoxy Equivalent, g/eq	450 - 550
Hydrolyzable Chlorine	0.08% Max
Total Chlorine	0.25% Max
Color	100 Apha Max
Viscosity @ 25°C	150-250 mPa•s

APPLICATION:

Epoxy resin 1001 is ixed with amine or polyamide curing agent to product cold-setting paint or amino resin to produce baking coating or other modified material

PACKING: net 25kg bags; 15mt / 20' fcl, palletized