

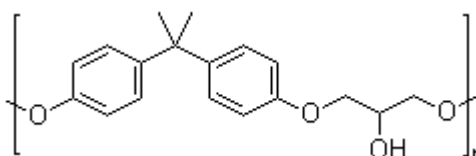
TECHNICAL DATA SHEET

NAME OF COMMODITY: **Epoxy Resin 828**
offset to: **DOW D.E.R. 331**

CAS NO.: 25068-38-6

MOLECULAR FORMULA: C₁₈H₂₁ClO₃

MOLECULAR WEIGHT:



STRUCTURE FORMULA:

TESTS	SPECIFICATIONS
Appearance	Clear Liquid
EPOXY EQUIVALENT, g/eq	184 - 194
Hydrolyzable Chlorine	300 ppm Max
Color	30 Apha Max
Volatile Content	0.2% Max
Viscosity @25°C	12000 - 14000 CPS

APPLICATION:

Epoxy Resin 828 applications include; high solids solvent-free coatings, adhesives and the construction industry. Tooling, potting, casting and molding. Composites, fiber reinforced pipes. Electrical and electronics.

PACKING: net 220kg drums; 17.6mt / 20' fcl, palletized or ISO tank