

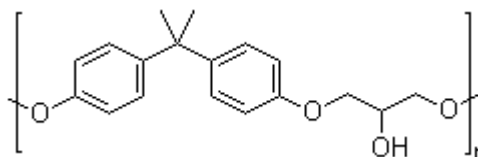
## TECHNICAL DATA SHEET

**NAME OF COMMODITY:** Epoxy Resin 827  
Offset to: DOW D.E.R. 330

**CAS NO.:** 25068-38-6

**MOLECULAR FORMULA:** C<sub>18</sub>H<sub>21</sub>ClO<sub>3</sub>

**MOLECULAR WEIGHT:**



**STRUCTURE FORMULA:**

TESTS	SPECIFICATIONS
Appearance	Clear Liquid
Epoxy Equivalent, g/eq	178 - 186
Saponifiable Chlorine, ppm	300 max
Inorganic Chlorine, ppm	200 max
Color, apha	90 max
Volatile Content	0.3% max
Viscosity, cps @ 25°C	7500 - 10000

**APPLICATION:**

**Epoxy Resin 827** is a low-to-medium viscosity, liquid epoxy resin derived from Bisphenol A and epichlorohydrin. When cross-linked with the appropriate curing agent, **Epoxy Resin 827** produces excellent mechanical, adhesive, dielectric and chemical resistance properties.

Applications include use as high solids, solvent-free coatings in many different market segments. Electrical and electronics applications include potting, impregnation, encapsulation and lamination.

**Epoxy Resin 827** is used in civil engineering and construction as flooring, adhesives, mortars and grout; to produce fiber reinforced pipes, tanks and other composite systems.

**PACKING:** net 220kg drums; 17.6mt / 20' fcl, palletized or ISO tank