

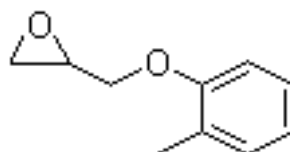
TECHNICAL DATA SHEET

NAME OF COMMODITY: Cresol Glycidyl Ether (OGE)

CAS NO.: 2210-79-9

MOLECULAR FORMULA: C₁₀H₁₂O₂

MOLECULAR WEIGHT: 164.20



STRUCTURE FORMULA:

TESTS	SPECIFICATIONS
Color Apha	150 Max
Epoxide Equivalent, g/eq	185 - 200
Hydrolyzable Chlorine, eq/100g	0.02 Max
Inorganic Chlorine eq/100g	0.005 Max
Water %	0.1 Max
Viscosity, mPa•s @ 25°C	2-10

APPLICATION:

To be used as epoxy resin active diluent, and used in non-solvent anti-corrosion coating, wiring-forming.

PACKING: net 200kg drum, 16mt / 20' fcl, palletized