

TECHNICAL DATA SHEET

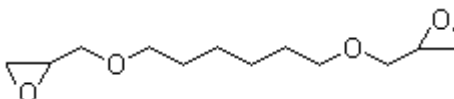
NAME OF COMMODITY: 1,6-HEXANEDIOL DIGLYCIDYL ETHER

CAS NO.: 16096-31-4

MOLECULAR FORMULA: C₁₂H₂₂O₄

MOLECULAR WEIGHT: 230.3

STRUCTURE FORMULA:



TESTS	SPECIFICATIONS
APPEARANCE	CLEAR LIQUID
EXPORY EQUIVALENT g/eq	147-161
HYDROLYZABLE CHLORINE PPM	1500 Max
INORGANIC CHLORIDE PPM	150 Max
TOTAL CHLORINE PPM	2500 Max
COLOR (GARDENER)	0.5 Max
VISCOSITY (25°C) CPS	40 Max

APPLICATION:

Widely used in electronics, electrical apparatus, electro-mechanics and machinery industries, also used in encapsulation, casting, maceration, etc. Additionally it still can be used in adhesive, constructional material, accessory, and flooring industries.

PACKING: net 180kg drum; 14.4MT / 20' FCL, palletized or ISO tank