

## TECHNICAL DATA SHEET

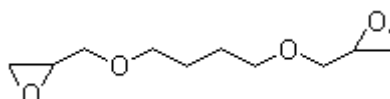
**NAME OF COMMODITY:** 1,4-BUTANEDIOL DIGLYCIDYL ETHER

**CAS NO.:** 2425-79-8

**MOLECULAR FORMULA:** C<sub>10</sub>H<sub>18</sub>O<sub>4</sub>

**MOLECULAR WEIGHT:** 202.25

**STRUCTURE FORMULA:**



TESTS	SPECIFICATIONS
Appearance	Clear slight yellow to yellow liquid
Color, Platinum Cobalt	≤ 40
Viscosity, mPa•s @ 25°C	10 ~ 20
Epoxide Equivalent, g/eq	121 - 136
Epoxy Value, eq/100g	0.74 - 0.8
Hydrolyzable Chloride, eq/100g	≤ 0.02
Inorganic Chlorine, eq/100g	≤ 0.005
Moisture Content, %	≤ 0.1

**APPLICATION:**

To be used in the coating of power wind blade. a water soluble diluent with good wetting ability and can improve osmosis ability of resin casting.

**PACKING:** net 200kg drum, 16mt / 20' fcl, palletized