

TECHNICAL DATA SHEET

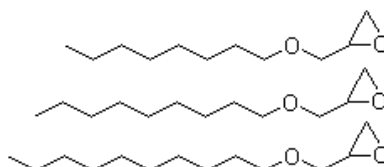
NAME OF COMMODITY: **ALKYL (C₈-C₁₀) GLYCIDYL ETHER (AGE)**

CAS NO.: 68609-96-1

MOLECULAR FORMULA: C₃₆H₇₂O₆

MOLECULAR WEIGHT: 600.95

STRUCTURE FORMULA:



TESTS	SPECIFICATIONS
APPEARANCE	LIGHT YELLOW LIQUID
EPOXY EQUIVALENT g/eq	223 - 238
COLOR (APHA)	30 Max
VISCOSITY - CPS @ 25°C	2-8
Hydrolyzable chloride, eq/100g	0.01Max
Inorganic chlorine, eq/100g	0.005Max
Moisture Content, %	0.1Max
EPI	10ppm Max

APPLICATION:

To lower the viscosity of liquid epoxy resin, to be used as floor material, concrete repairing material, filling material, flexibility material, embedding material, to be used in diluent and toughness improvement, and winding - forming

PACKING: net 180kg drums; 14.4MT / 20' FCL, palletized or ISO tank