



## TECHNICAL DATA SHEET

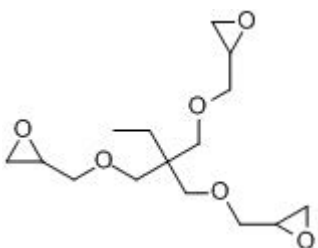
**NAME OF COMMODITY:** Trimethylol Propane Triglycidyl Ether

**CAS NO.:** 30499-70-8

**MOLECULAR FORMULA:** C<sub>15</sub>H<sub>26</sub>O<sub>6</sub>

**MOLECULAR WEIGHT:** 302.36

**STRUCTURE FORMULA:**



TESTS	SPECIFICATIONS
Color, apha	60MAX
Viscosity, mPa·s @ 25°C	90 ~ 180
Epoxide Equivalent Weight, g/eq	136-145
Hydrolyzable Chloride %	0.30MAX
Inorganic Chlorine mg/kg	50 MAX
Moisture Content %	0.1MAX
Free ECH ppm	10 MAX

### **APPLICATION:**

1. It can be used as reactive diluent of epoxy resin, polyester and melamine resin.

**PACKING:** net 200kg drum, 16 mt / 20' fcl, palletized