



TECHNICAL DATA SHEET

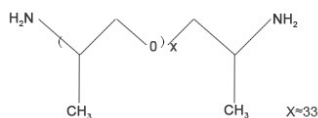
NAME OF COMMODITY: Polyether Amine ZD1200

Offset to: JEFFAMINE. D2000

CAS NO.: 9046-10-0

MOLECULAR FORMULA: $C_{3n+3}H_{6n+10}O_nN_2$ $n \approx 33.1$

MOLECULAR WEIGHT: 2000



STRUCTURE FORMULA:

TESTS	SPECIFICATIONS
Appearance	Colorless to light yellow liquid
Amine Value meq/g	0.93-1.05
Primary Amine Content %	97 Min
Color	50 Apha Max
Water Content	0.25% Max

APPLICATION:

Polyether Amine ZD1200 is a difunctional primary amine. Its mainchain is consisted of repeating oxypropylene units Epoxy curing agents, adhesives, and surfactants.

PACKING: net 200kg drums; 16mt / 20' fcl, palletized or ISO tank